



US008289234B2

(12) **United States Patent**
Kim

(10) **Patent No.:** **US 8,289,234 B2**
(45) **Date of Patent:** ***Oct. 16, 2012**

(54) **ORGANIC LIGHT EMITTING DISPLAY (OLED)**

(75) Inventor: **Yang-Wan Kim**, Suwon-si (KR)

(73) Assignee: **Samsung Display Co., Ltd.**,
Giheung-Gu, Yongin, Gyeonggi-Do (KR)

(*) Notice: Subject to any disclaimer, the term of this patent is extended or adjusted under 35 U.S.C. 154(b) by 983 days.

This patent is subject to a terminal disclaimer.

6,885,029 B2 *	4/2005	Miyazawa	257/59
6,919,871 B2	7/2005	Kwon	
7,301,744 B2 *	11/2007	Miyazawa	361/100
8,049,684 B2 *	11/2011	Kim	345/76
2001/0019327 A1	9/2001	Kim et al.	
2002/0196389 A1	12/2002	Koyama	
2003/0043132 A1	3/2003	Nakamura	
2003/0085885 A1	5/2003	Nakayoshi	

(Continued)

FOREIGN PATENT DOCUMENTS

CN 1312535 9/2001

(Continued)

OTHER PUBLICATIONS

Office action from Chinese Patent Office issued in Applicant's corresponding Chinese Patent Application No. 200610108798.7 dated Feb. 6, 2009.

(Continued)

(21) Appl. No.: **11/488,114**

(22) Filed: **Jul. 18, 2006**

(65) **Prior Publication Data**

US 2007/0040770 A1 Feb. 22, 2007

(30) **Foreign Application Priority Data**

Aug. 16, 2005 (KR) 10-2005-0074865

(51) **Int. Cl.**
G09G 3/30 (2006.01)

(52) **U.S. Cl.** 345/76; 345/78; 345/204; 313/463

(58) **Field of Classification Search** 345/76,
345/204

See application file for complete search history.

(56) **References Cited**

U.S. PATENT DOCUMENTS

5,021,774 A	6/1991	Ohwada	
5,402,141 A *	3/1995	Haim et al.	345/88
6,046,890 A	4/2000	Yamada et al.	
6,229,506 B1	5/2001	Dawson et al.	
6,847,172 B2	1/2005	Suzuki	
6,864,637 B2	3/2005	Park et al.	

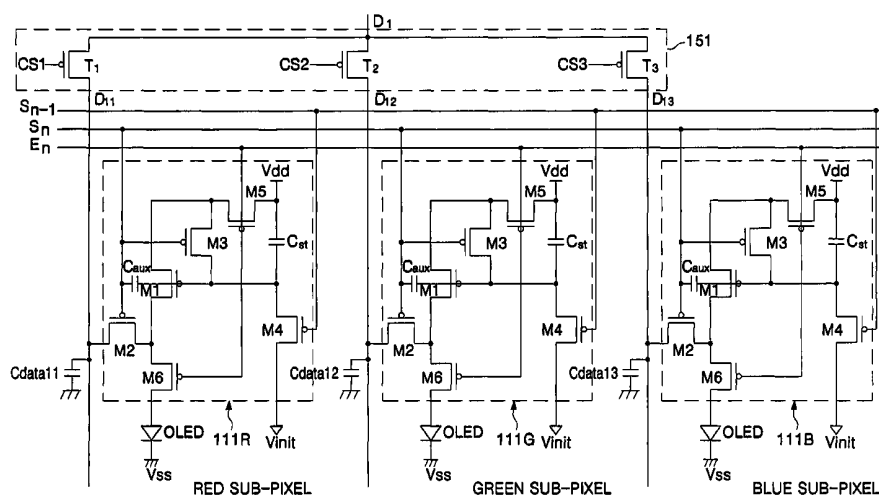
Primary Examiner — Grant Sitta

(74) Attorney, Agent, or Firm — Robert E. Bushnell, Esq.

(57) **ABSTRACT**

An Organic Light Emitting Display (OLED) that is capable of decreasing the number of output lines for a data driver using a demultiplexer, displaying an image with uniform brightness, and adjusting white balance includes: a plurality of red, green and blue sub-pixels, and each sub-pixel is provided with an auxiliary capacitor to compensate a decreased driving voltage. The respective auxiliary capacitors are different in capacitance according to emission efficiency of the red, green and blue sub-pixels. The auxiliary capacitor of the green sub-pixel has a larger capacitance than the auxiliary capacitor of the red sub-pixel, and the auxiliary capacitor of the red sub-pixel has a larger capacitance than the auxiliary capacitor of the blue sub-pixel. This enables the white balance to be adjusted with the same data voltage.

9 Claims, 7 Drawing Sheets



U.S. PATENT DOCUMENTS

2003/0098657	A1	5/2003	Suzuki	
2003/0179164	A1	9/2003	Shin et al.	
2003/0227262	A1 *	12/2003	Kwon	315/169.3
2004/0080474	A1	4/2004	Kimura	
2004/0090400	A1	5/2004	Yoo	
2004/0104870	A1	6/2004	Mametsuka	
2004/0145547	A1 *	7/2004	Oh	345/76
2004/0207583	A1 *	10/2004	Koo et al.	345/82
2004/0239599	A1	12/2004	Koyama	
2005/0024297	A1	2/2005	Shin	
2005/0068271	A1	3/2005	Lo	
2005/0093464	A1 *	5/2005	Shin et al.	315/169.1
2005/0156829	A1	7/2005	Choi et al.	
2007/0118781	A1 *	5/2007	Kim	714/727

FOREIGN PATENT DOCUMENTS

CN	1428757	7/2003
CN	1490779	4/2004
CN	1499473	5/2004
CN	1577453	2/2005
EP	1 496 495	12/2005
EP	1 635 324	3/2006
JP	10254412	9/1998
JP	2001147659	5/2001
JP	2002328643	11/2002
JP	2003-140612	5/2003
JP	2003-150082	5/2003
JP	2003140612	5/2003
JP	2004-012634	1/2004
JP	2004-012897	1/2004
JP	2004029791	1/2004
JP	2004-093682	3/2004
JP	2004-117921	4/2004
JP	2004-334179	11/2004

JP	2005-031630	2/2005
JP	2005134874	5/2005
KR	10-2002-0090574	12/2002
KR	1020030095215	12/2003
KR	1020050041088	5/2005
WO	01/06484	1/2001
WO	03105117	12/2003

OTHER PUBLICATIONS

Office action from USPTO issued in Applicant's related U.S. Appl. No. 11/521,849 dated Sep. 22, 2009.

Office action from Japanese Patent Office issued in Applicant's corresponding Japanese Patent Application No. 2006-218301 dated Dec. 8, 2009 and Request for Entry of the Accompanying Office Action for the Japanese Office action attached herewith.

Issue Notification from Chinese Patent Office issued in Applicant's corresponding Chinese Patent Application No. 200610108798.7 dated Feb. 24, 2010, and Request for Entry of the Accompanying Document for the Chinese Issue Notification attached herewith.

S.M Choi, et al. "A Self-compensated Voltage Programming Pixel Structure for Active-Matrix Organic Light Emitting Diodes", in Japanese Office action issued on Aug. 16, 2011 by Japanese Patent Office, corresponding to Japanese Patent Application No. 2006-218301.

Office Action from the Chinese Patent Office issued in Applicant's corresponding Chinese Patent Application No. 200610108798.7 dated Mar. 28, 2008.

Search Report from the European Patent Office issued in Applicant's corresponding European Patent Application No. 06254299.8 dated Jun. 4, 2008.

Choi et al., "A Self-Compensated Voltage Programming Pixel Structure for Active-Matrix Organic Light Emitting Diodes" XP008057381, pp. 535-538, 2003.

* cited by examiner

FIG. 1

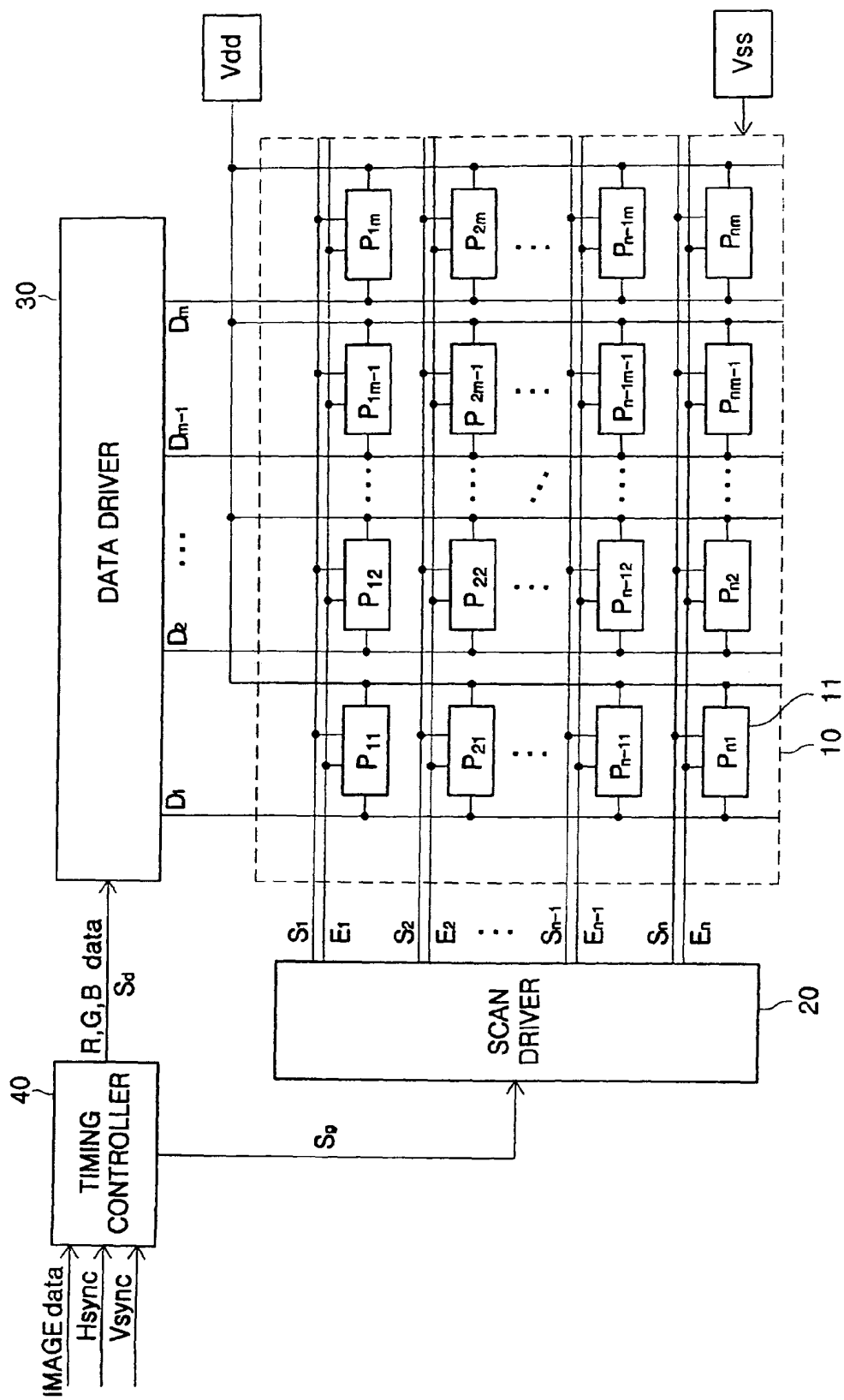


FIG. 2

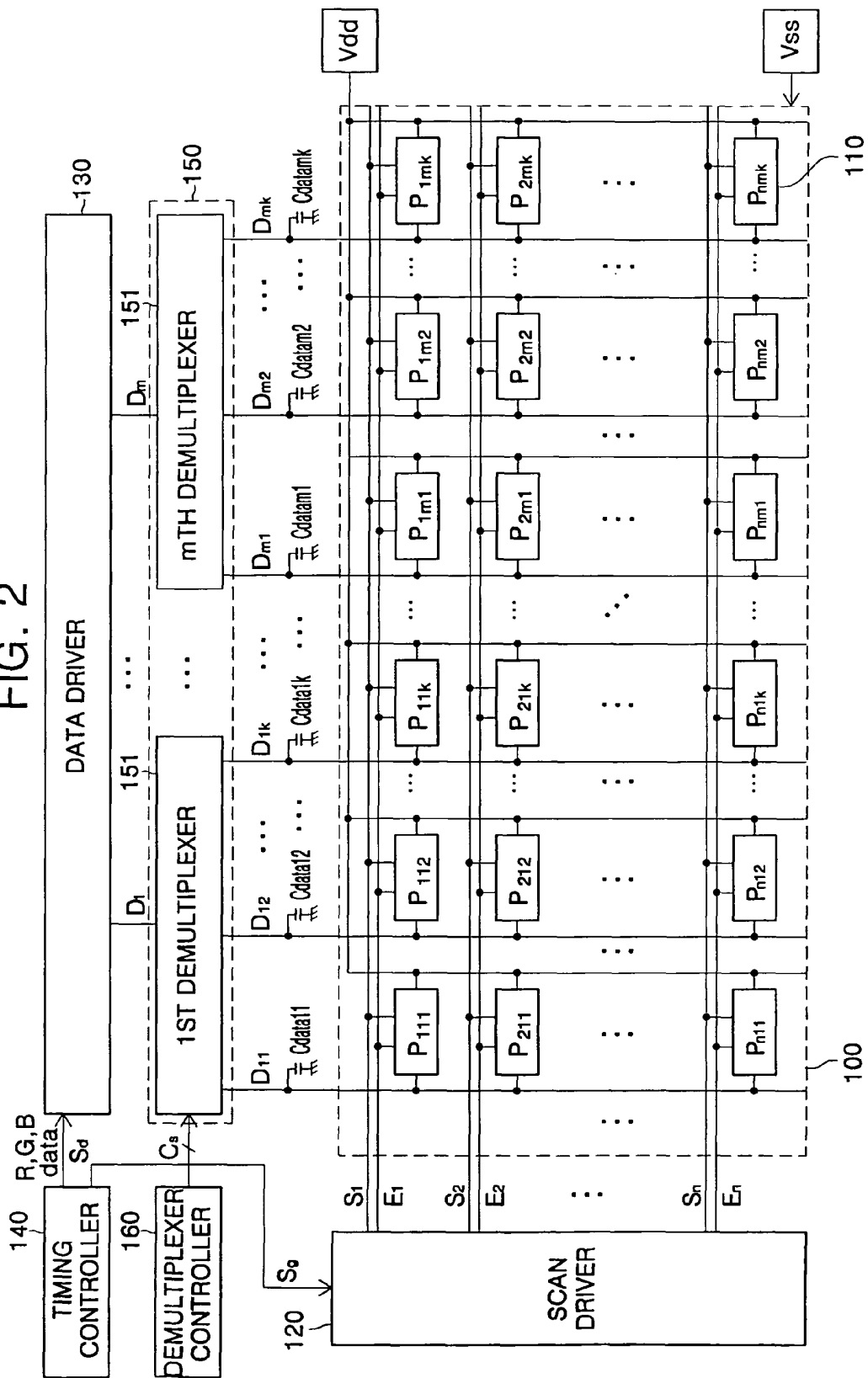


FIG. 3

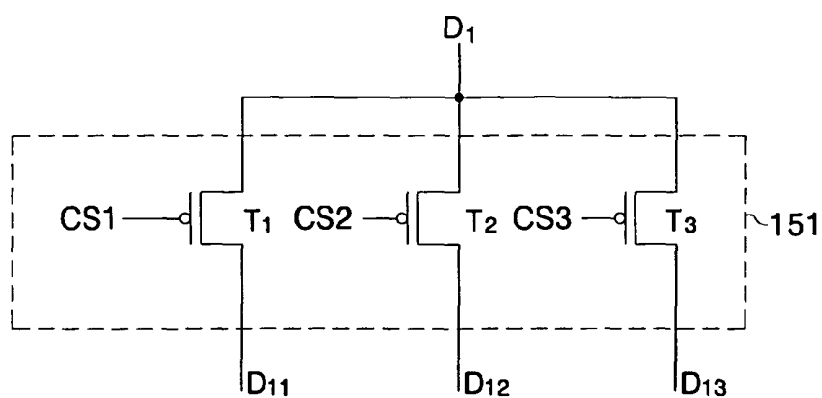


FIG. 4

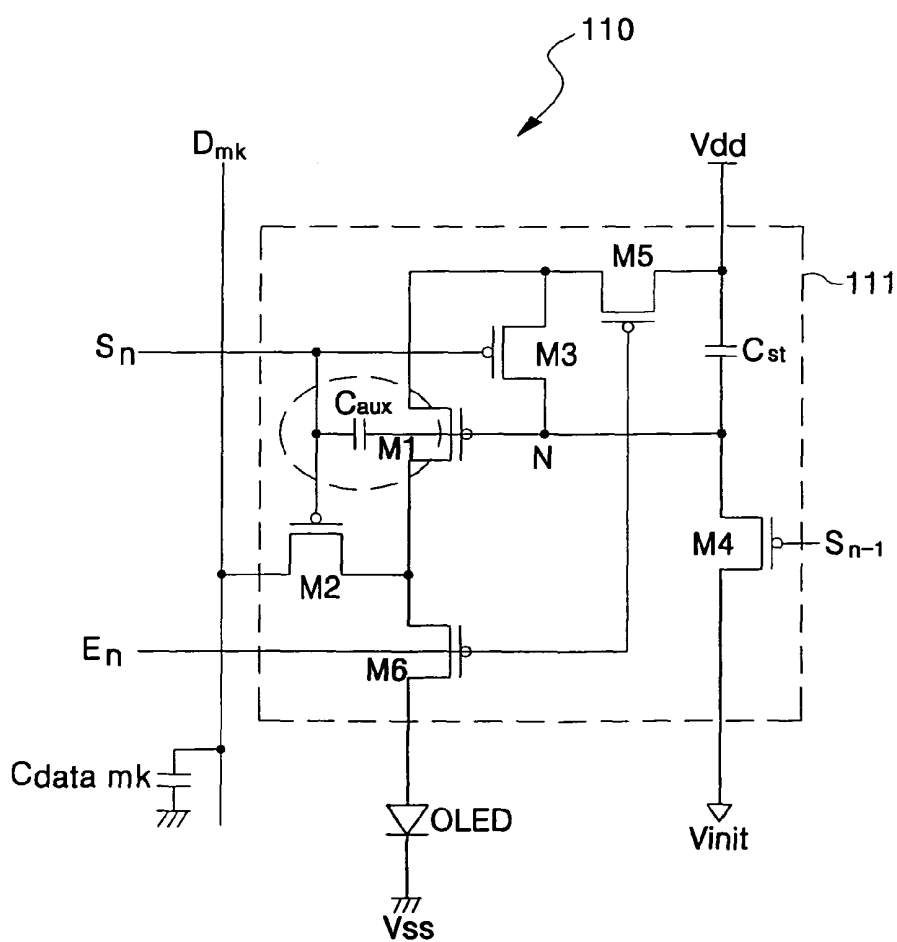


FIG. 5

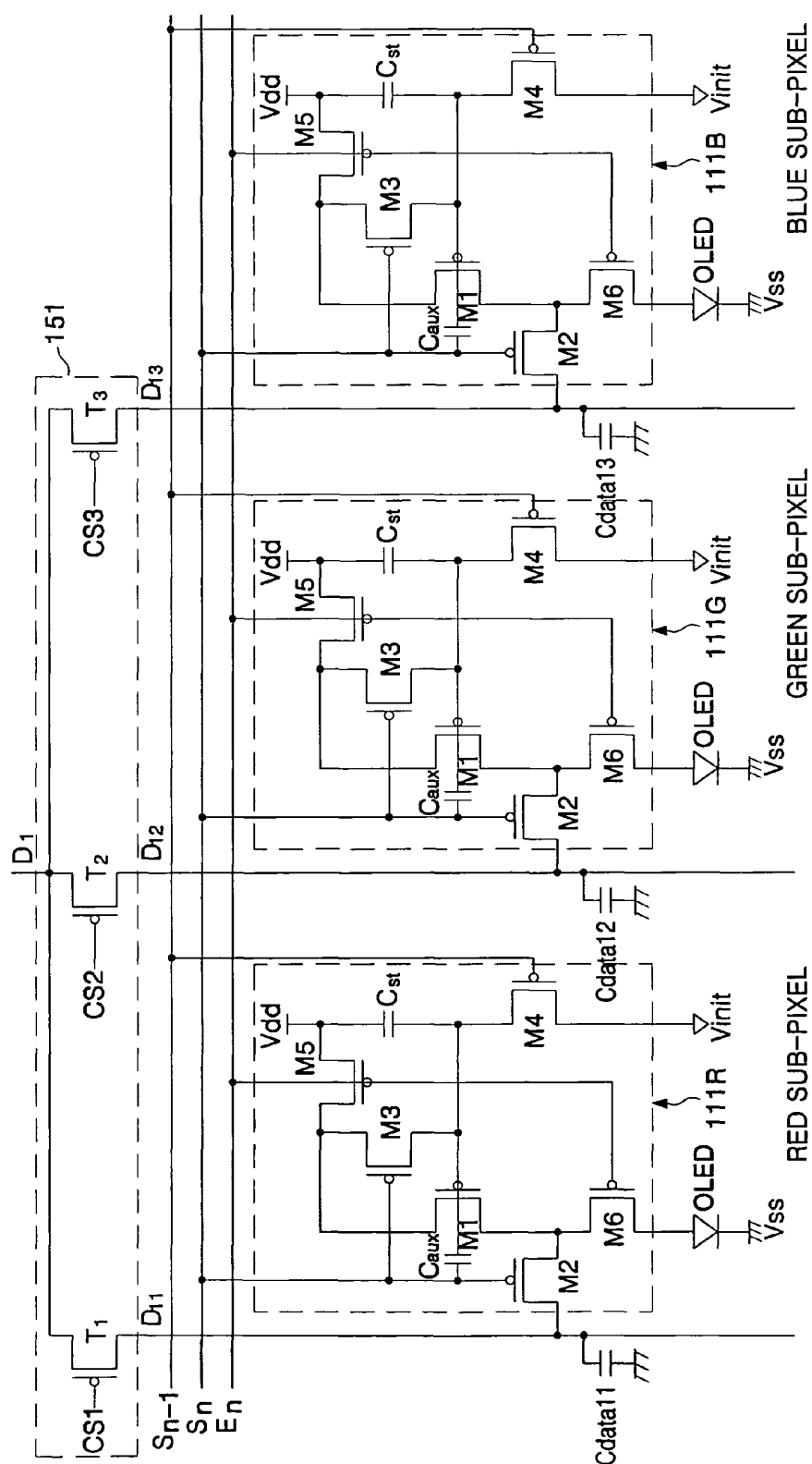


FIG. 6

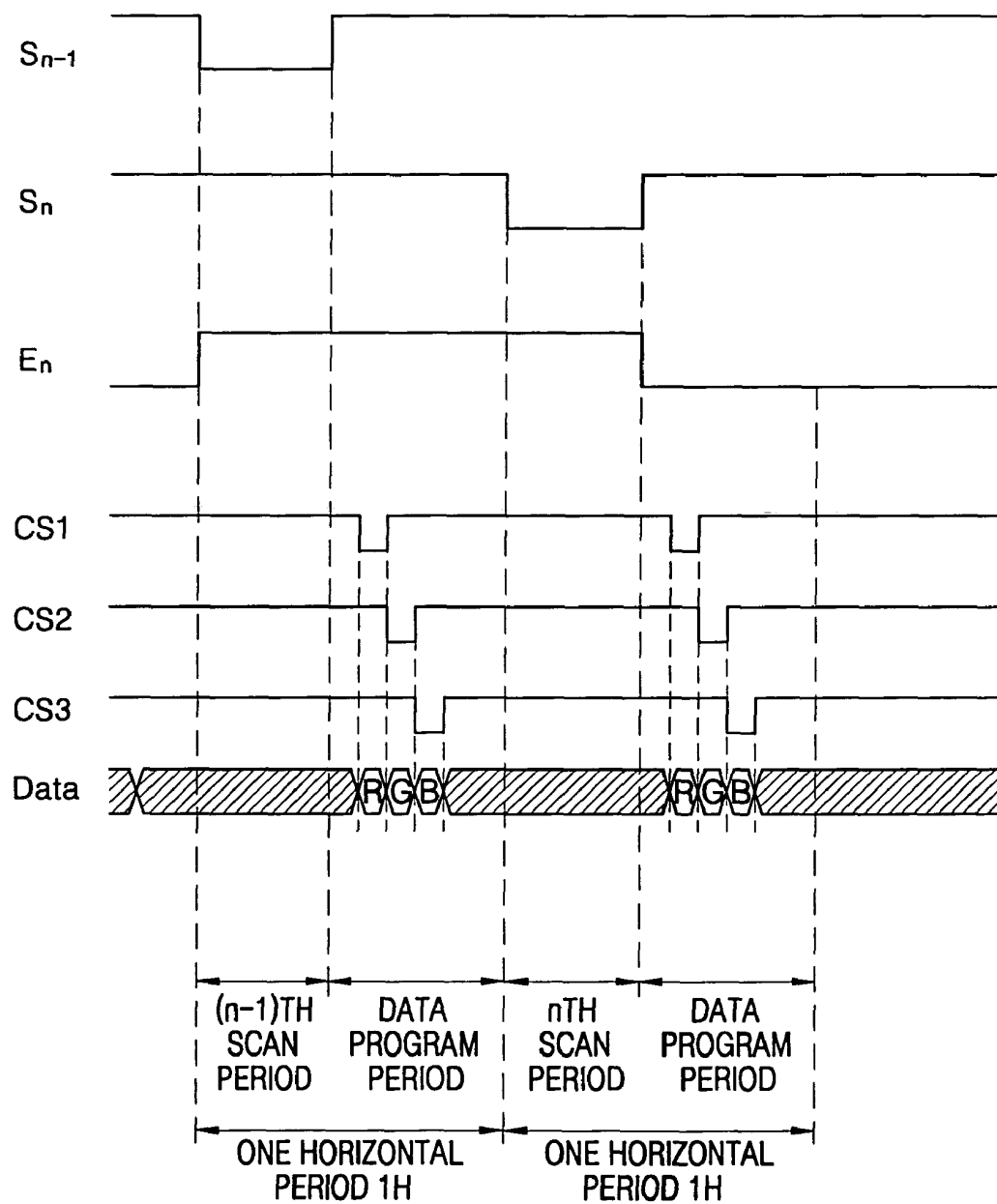


FIG. 7

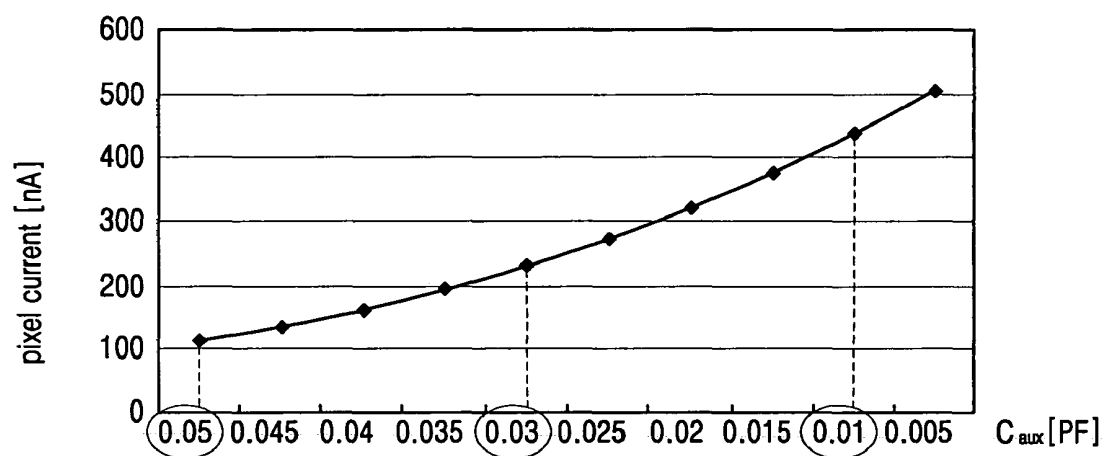
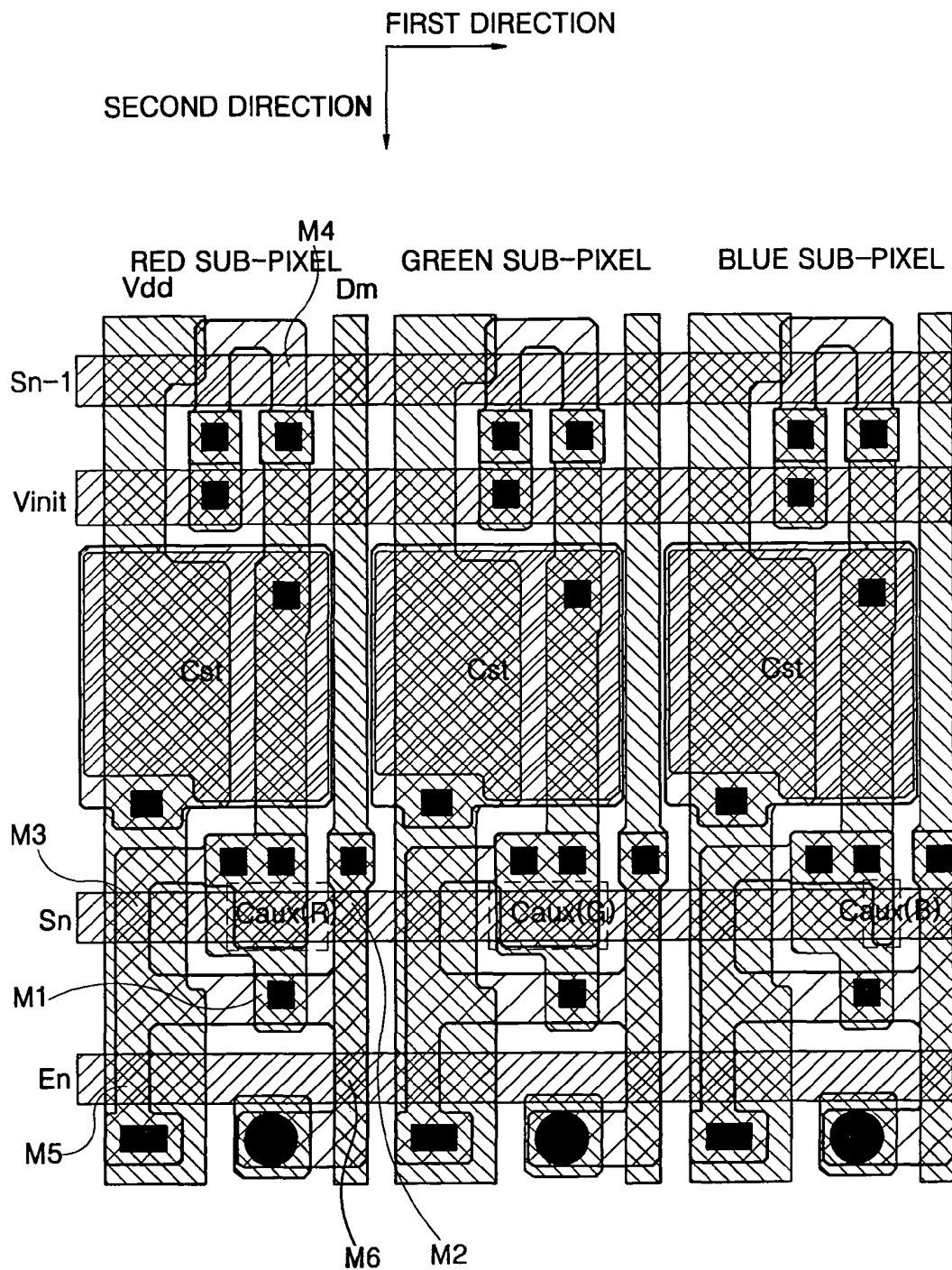


FIG. 8



ORGANIC LIGHT EMITTING DISPLAY (OLED)

CLAIM OF PRIORITY

This application makes reference to, incorporates the same herein, and claims all benefits accruing under 35 U.S.C. § 119 from an application for ORGANIC ELECTROLUMINESCENT DISPLAY DEVICE earlier filed in the Korean Intellectual Property Office on the 16 of Aug. 2005 and there duly assigned Serial No. 10-2005-0074865.

BACKGROUND OF THE INVENTION

1. Field of the Invention

The present invention relates to an Organic Light Emitting Display (OLED), and more particularly, to an OLED that is capable of decreasing the number of output lines for a data driver using a demultiplexer, displaying an image with uniform brightness, and adjusting white balance.

2. Description of the Related Art

Recently, various flat panel displays have been developed as alternatives to a relatively heavy and bulky cathode ray tube. Flat Panel Displays (FPDs) include Liquid Crystal Displays (LCDs), Field Emission Displays (FEDs), Plasma Display Panels (PDPs), Organic Light Emitting Displays (OLEDs), etc.

Among the FPDs, the OLED includes an organic light emitting diode that emits light for itself by recombination of electrons from a cathode and holes from an anode. Such an OLED has advantages in that its response time is relatively fast (about 1 μ s) and its power consumption is relatively low. Generally, the OLED employs a Thin Film Transistor (TFT) provided in each pixel for supplying a driving current corresponding to a data signal to the organic light emitting diode, thereby allowing the organic light emitting diode to emit light and display a predetermined image.

An OLED includes a display panel, a scan driver, a data driver, and a timing controller.

The display panel includes a plurality of pixels formed in regions where a plurality of scan lines, a plurality of emission control lines, and a plurality of data lines intersect each other. The respective pixels receive a first power supply and a second power supply from the outside, and emit light corresponding to data signals transmitted from the plurality of data lines, thereby displaying a predetermined image. Furthermore, in the pixels, their emission times are controlled by emission control signals transmitted through the emission control lines.

The scan driver generates scan signals in response to a scan control signal from the timing controller, and sequentially supplies the scan signals to the plurality of scan lines, thereby selecting the pixels. Furthermore, the scan driver generates emission control signals in response to the scan control signal, and sequentially supplies the emission control signals to the plurality of emission control lines, thereby controlling the light emission.

The data driver receives red (R), green (G) and blue (B) data from the timing controller, generates the data signals in response to a data control signal, and supplies the data signals to the plurality of data lines. The data driver supplies the data signal corresponding to one horizontal line to the data lines per one horizontal period.

The timing controller generates the data control signal and the scan control signal in correspondence to video data and horizontal/vertical synchronous signals supplied from an external graphic controller. The timing controller respec-

tively supplies the data control signals and the scan control signals to the data driver and the scan driver.

In an OLED with this configuration, the respective pixels are placed in regions where the plurality of scan lines, the plurality of emission control lines, and the plurality of data lines intersect each other. The data driver is provided with m output lines to respectively supply the data signals to m data lines. That is, in this OLED, the data driver must be provided with the same number of output lines as the number of data lines. Accordingly, the data driver internally includes a plurality of data Integrated Circuits (IC) to have m output lines, thereby increasing manufacturing cost. In particular, as the resolution and size of the display panel increases, the data driver needs more data ICs, thereby further increasing the manufacturing cost.

SUMMARY OF THE INVENTION

The present invention, therefore, provides an Organic Light Emitting Display (OLED) that is capable of decreasing the number of output lines for a data driver using a demultiplexer, displaying an image with uniform brightness, and adjusting white balance with uniform voltage.

In an exemplary embodiment of the present invention, an Organic Light Emitting Display (OLED) having a plurality of pixels each having a red sub-pixel, a green sub-pixel, and a blue sub-pixel is provided, each sub-pixel including: a pixel driver connected to a data line, a scan line and a first power supply voltage line, and including a storage capacitor adapted to store a driving voltage supplied via the data line, and to generate a predetermined driving current; and an organic light emitting diode connected between the pixel driver and a second power supply voltage line, and adapted to emit light with a brightness corresponding to the driving current; and an auxiliary capacitor connected between the storage capacitor and the scan line, and adapted to generate a compensation voltage to increase the driving voltage; the auxiliary capacitors of the sub-pixels have different capacitances according to an emission efficiency ratio of their respective sub-pixels.

The capacitance of the auxiliary capacitor is inversely proportional to a driving current ratio of the sub-pixels to generate a white pixel. The auxiliary capacitor of the green sub-pixel has a larger capacitance than that of the auxiliary capacitor of the red sub-pixel, and the auxiliary capacitor of the red sub-pixel has a larger capacitance than that of the auxiliary capacitor of the blue sub-pixel.

A compensation voltage increased by the auxiliary capacitor is defined by the following equation:

$$V_x = C_{aux} / (C_{st} + C_{aux}) * (V_{DD} - V_{SS})$$

where V_x is the compensation voltage, C_{aux} is the capacitance of the auxiliary capacitor, C_{st} is the capacitance of the storage capacitor, V_{DD} is a high level scan signal, and V_{SS} is a low level scan signal.

The pixel driver further includes: an initialization transistor connected between a first terminal of the storage capacitor and an initialization voltage line, and adapted to be turned-on by an $(n-1)^{th}$ scan signal to initialize the storage capacitor; a first switching transistor connected to the data line, and adapted to be turned-on by an n^{th} scan signal to transmit the data voltage; a driving transistor having a first electrode connected to the first switching transistor and a gate electrode connected to a first terminal of the storage capacitor, and adapted to generate the driving current; a threshold voltage compensation transistor connected between the gate electrode and a second electrode of the driving transistor, and adapted to be turned-on by the n^{th} scan signal to cause the

driving transistor be diode-connected and to compensate a threshold voltage of the driving transistor; and a second switching transistor connected between the first power supply voltage line and the second electrode of the driving transistor, and adapted to be turned-on by an n^{th} emission control signal to transmit the first power supply voltage to the second electrode of the driving transistor.

The pixel driver further includes an emission control transistor connected between the driving transistor and the organic light emitting diode, and adapted to be turned-on by the n^{th} emission control signal to transmit the driving current to the organic light emitting diode.

The first through sixth transistors include N or P MOS-FETs having the same conductivity type.

In another exemplary embodiment of the present invention, an Organic Light Emitting Display (OLED) is provided including: a display panel having a plurality of pixels adapted to display an image; a scan driver adapted to supply a scan signal to the display panel; a data driver adapted to supply a data signal to the display panel; a timing controller adapted to generate a data control signal to control the data signal and a scan control signal to control the scan driver; a demultiplexer coupled between the data driver and the display panel, and adapted to sequentially supply the data signal to corresponding sub-pixels that constitute the pixel; and a demultiplexer controller adapted to control the demultiplexer.

The demultiplexer is connected to the display panel via data lines connected to respective sub-pixels. The data lines are respectively connected to auxiliary capacitors and wherein the auxiliary capacitors have different capacitances according to their respective sub-pixels.

The auxiliary capacitors have different capacitances corresponding to an emission efficiency of their respective sub-pixels. The auxiliary capacitors of the green, red, and blue sub-pixels have respective capacitances in order of $\text{green} > \text{red} > \text{blue}$.

The demultiplexer sequentially supplies the data signals to each sub-pixel during a horizontal period.

The scan driver supplies the scan signal to the pixel, such that the data signals are simultaneously provided to the sub-pixels.

BRIEF DESCRIPTION OF THE DRAWINGS

A more complete appreciation of the present invention, and many of the attendant advantages thereof, will be readily apparent as the present invention becomes better understood by reference to the following detailed description when considered in conjunction with the accompanying drawings in which like reference symbols indicate the same or similar components, wherein:

FIG. 1 is a block diagram of an OLED;

FIG. 2 is a block diagram of an OLED according to an embodiment of the present invention;

FIG. 3 is an internal circuit diagram of a demultiplexer of FIG. 2;

FIG. 4 is a circuit diagram of a representative pixel among $N \times M$ pixels of FIG. 2;

FIG. 5 is a circuit diagram of a detailed connection structure between the representative demultiplexer of FIG. 3 and the representative pixels of FIG. 4 according to an embodiment of the present invention;

FIG. 6 is a timing diagram of the pixel circuit of FIG. 5;

FIG. 7 is a simulation graph of changes in a driving current according to the capacitance of an auxiliary capacitor in a pixel of FIG. 4; and

FIG. 8 is a layout diagram of red, green and blue sub-pixels capable of adjusting white balance with the same voltage based on the simulation of FIG. 7 according to an embodiment of the present invention.

DETAILED DESCRIPTION OF THE INVENTION

FIG. 1 is a block diagram of an OLED. Referring to FIG. 1, the OLED includes a display panel 10, a scan driver 20, a data driver 30, and a timing controller 40.

The display panel 10 includes a plurality of pixels P11 through Pnm formed in regions where a plurality of scan lines S1 through Sn, a plurality of emission control lines E1 through En, and a plurality of data lines D1 through Dm intersect each other. The respective pixels P11 through Pnm receive a first power supply Vdd and a second power supply Vss from the outside, and emit light corresponding to data signals transmitted from the plurality of data lines D1 through Dm, thereby displaying a predetermined image. Furthermore, in the pixels P11 through Pnm, their emission times are controlled by emission control signals transmitted through the emission control lines E1 through En.

The scan driver 20 generates scan signals in response to a scan control signal Sg from the timing controller 40, and sequentially supplies the scan signals to the plurality of scan lines S1 through Sn, thereby selecting the pixels P11 through Pnm. Furthermore, the scan driver 20 generates emission control signals in response to the scan control signal Sg, and sequentially supplies the emission control signals to the plurality of emission control lines E1 through En, thereby controlling the light emission.

The data driver 30 receives red (R), green (G) and blue (B) data from the timing controller 40, generates the data signals in response to a data control signal Sd, and supplies the data signals to the plurality of data lines D1 through Dm. The data driver 30 supplies the data signal corresponding to one horizontal line to the data lines D1 through Dm per one horizontal period.

The timing controller 40 generates the data control signal Sd and the scan control signal Sg in correspondence with video data and horizontal/vertical synchronous signals Hsync and Vsync supplied from an external graphic controller (not shown). The timing controller 40 respectively supplies the data control signals Sd and the scan control signals Sg to the data driver 30 and the scan driver 20.

In an OLED with this configuration, the respective pixels P11 through Pnm are placed in regions where the plurality of scan lines S1 through Sn, the plurality of emission control lines En through Em, and the plurality of data lines D1 through Dm intersect each other. The data driver 30 is provided with m output lines to respectively supply the data signals to m data lines D1 through Dm. That is, in this OLED, the data driver 30 must be provided with the same number of output lines as the number of data lines D1 through Dm. Accordingly, the data driver 30 internally includes a plurality of data integrated circuits (IC) to have m output lines, thereby increasing manufacturing cost. In particular, as the resolution and size of the display panel 10 increases, the data driver 30 needs more data ICs, thereby further increasing the manufacturing cost.

Hereinafter, exemplary embodiments of the present invention are described with reference to accompanying drawings.

FIG. 2 is a block diagram of an OLED according to an embodiment of the present invention. Referring to FIG. 2, an OLED according to an embodiment of the present invention

includes a display panel **100**, a scan driver **120**, a data driver **130**, a timing controller **140**, a demultiplexer unit **150**, and a demultiplexer controller **160**.

The display panel **100** includes a plurality of pixels **P111** through **Pnmk** which are placed in regions defined by a plurality of scan lines **S1** through **Sn**, a plurality of emission control lines **E1** through **En**, and a plurality of data lines **D11** through **Dmk**.

The respective pixels **P111** through **Pnmk** emit light corresponding to data signals supplied through the corresponding data lines **D11** through **Dmk**. Among the pixels **P111** through **Pnmk**, a representative pixel **110** will be described later.

Furthermore, the data lines **D11** through **Dmk** corresponding to the pixels **P111** through **Pnmk** are respectively provided with a plurality of data line capacitors C_{data11} through C_{datamk} to temporarily store the data signals.

For example, during a data program period, when a data voltage is supplied to the 1st data line **D11** to cause the 1st pixel **P111** emit light, the 1st data line capacitor C_{data11} formed in the data line **D11** stores the data voltage temporarily. Next, during a scan period, when the 1st pixel **P111** is selected by the 1st scan signal **S1**, the data voltage stored in the 1st data line capacitor C_{data11} is supplied to the 1st pixel **P111**, thereby causing the 1st pixel **P111** emit the light corresponding to the data voltage.

Thus, the data line capacitors C_{data11} , through C_{datamk} formed in the data lines **D11** through **Dmk** respectively temporarily store the data signals to be supplied to the plurality of data lines **D11** through **Dmk**. Furthermore, the data line capacitors C_{data11} through C_{datamk} supply the stored data voltage to the pixels **P111** through **Pnmk** selected by the scan signals. The data line capacitors C_{data11} through C_{datamk} are achieved by parasitic capacitors equivalently formed by the data lines **D11** through **Dmk**, a third electrode, and an insulating layer interposed therebetween. Substantially, each of the data line capacitors C_{data11} through C_{datamk} equivalently formed in the data lines **D11** through **Dmk** preferably has a capacitance larger than the capacitance of a storage capacitor C_{st} provided in each of the pixel **P111** through **Pnmk** in order to stably store the data signal.

The scan driver **120** generates the scan signals in response to scan control signals **Sg** supplied from the timing controller **140**, and sequentially supply the scan signals to the scan lines **S1** through **Sn**. The scan driver **110** supplies the scan signal only in a predetermined period (i.e., the scan period) of one horizontal period **1H** as shown in FIG. 6. According to an embodiment of the present invention, one horizontal period **1H** is divided into the scan period and the data program period. The scan driver **120** supplies the scan signal to the scan line **Sn** in the scan period of one horizontal period, and does not supply the scan signal in the data program period. Furthermore, the scan signal can be supplied during the data program period. So, the scan period can be overlapped with the data program period. The scan driver **120** generates the emission control signals in response to the scan control signals **Sg**, and sequentially supplies the emission control signals to the emission control lines **E1** through **En**.

The data driver **130** receives **R**, **G** and **B** data from the timing controller **140**, and sequentially supplies **R**, **G** and **B** data signals to output lines **D1** through **Dm** in response to data control signals **Sd**. The data driver **130** sequentially supplies **k** data signals (where **k** is an integer larger than 2, e.g., **k** is three **R**, **G** and **B** data signals as shown in FIG. 6) to the output lines **D1** through **Dm** connected to respective output terminals. In more detail, the data driver **130** sequentially supplies the data signals (e.g., the **R**, **G** and **B** data) to the correspond-

ing pixels in the data program period of one horizontal period **1H**. The data signals (**R**, **G** and **B**) to be supplied to the corresponding pixels are supplied only during the data program period.

The timing controller **140** generates the data control signals **Sd** and the scan control signals **Sg** in correspondence with video data and horizontal and vertical synchronous signals supplied from an external graphic controller (not shown). The timing controller **140** respectively supplies the data control signals **Sd** and the scan control signals **Sg** to the data driver **130** and the scan driver **120**.

The demultiplexer unit **150** includes **m** demultiplexers **151**. Specifically, the demultiplexer unit **150** includes the same number of demultiplexers **151** as the number of output lines **D1** through **Dm** connected to the data driver **130**, and input terminals of the demultiplexers **151** are connected to the output terminals **D1** through **Dm** of the data driver **130**, respectively. Furthermore, an output terminal of the demultiplexer **151**, e.g., the 1st demultiplexer is connected to **k** data lines **D11** through **D1k**. The 1st demultiplexer **151** applies **k** data signals, which are sequentially supplied in the data program period, to **k** data lines **D11** through **D1k**. When the **k** data signals sequentially supplied to one output line **D1** are sequentially supplied to the **k** data lines **D11** through **D1k**, the number of output lines provided in the data driver **130** can be remarkably decreased. For example, when **k**=3, the number of output lines provided in the data driver **130** is divided by 3, and thus the number of data ICs provided in the data driver **130** is also reduced. According to an embodiment of the present invention, the demultiplexer **151** is used for supplying the data signal corresponding to one output line **D1** to **k** data lines **D11** through **D1k**, thereby reducing the manufacturing cost of the data IC.

The demultiplexer controller **160** supplies **k** control signals to control terminals of the demultiplexer **151** in the data program period of one horizontal period **1H** such that **k** data signals are divided and supplied through the output line **D1** to **k** data lines **D11** through **D1k**. The **k** control signals supplied from the demultiplexer controller **160** are sequentially supplied as shown in FIG. 6, without overlapping each other in the data program period. In this embodiment, the demultiplexer controller **160** is externally provided in the timing controller **140**. Alternatively, the demultiplexer controller **160** can be internally provided in the timing controller **140**.

FIG. 3 is an internal circuit diagram of the demultiplexer of FIG. 2. In FIG. 3, for convenience of explanation, the demultiplexer is described on the assumption that **k** is 3 and data is input in the order of red, green and blue. Furthermore, the demultiplexer is described on the assumption that it is connected to the 1st output line **D1** of the data driver **130**.

Referring to FIG. 3, the demultiplexer **151** includes a first switching element **T1**, a second switching element **T2**, and a third switching element **T3**. Each of the switching elements **T1**, **T2** and **T3** can be made of a Thin Film Transistor (TFT). In this embodiment, the switching elements **T1**, **T2** and **T3** are formed of P-channel Metal Oxide Semiconductor Field Effect Transistors (PMOSFETs), but are not limited thereto. Alternatively, the switching elements **T1**, **T2** and **T3** can be formed of n-channel MOSFETs.

The first switching element **T1** is connected between the 1st output line **D1** and the 1st data line **D11**. The first switching element **T1** is turned-on when a first control signal **CS1** is supplied from the demultiplexer controller **160**, and supplies a red data signal from the 1st output line **D1** to the 1st data line **D11**. The data signal supplied to the 1st data line **D11** is stored in the 1st data line capacitor C_{data11} in the data program period of FIG. 2.

The second switching element T2 is connected between the 1st output line D1 and the 2nd data line D12. The second switching element T2 is turned-on when a second control signal CS2 is supplied from the demultiplexer controller 160, and supplies a green data signal from the 1st output line D1 to the 2nd data line D12. The data signal supplied to the 2nd data line D12 is stored in the 2nd data line capacitor C_{data12} in the data program period of FIG. 2.

The third switching element T3 is connected between the 1st output line D1 and the 3rd data line D13. The third switching element T3 is turned-on when a third control signal CS3 is supplied from the demultiplexer controller 160, and supplies a blue data signal from the 1st output line D1 to the 3rd data line D13. The data signal supplied to the 3rd data line D13 is stored in the 3rd data line capacitor C_{data13} in the data program period of FIG. 2.

Detailed operations of the demultiplexer 151 are described later in association with the structure of the pixel 110.

FIG. 4 is a circuit diagram of a representative pixel among N×M pixels of FIG. 2. The pixels according to an embodiment of the present invention are not limited to the pixel shown in FIG. 4.

Referring to FIG. 4, the pixel 110 according to an embodiment of the present invention includes an organic light emitting diode; and a pixel driving circuit 111 connected to a data line D_{mk}, previous and current scan lines S_{n-1} and S_n, an emission control line E_n, a first power supply voltage line V_{dd}, and an initialization voltage line V_{init} and generating driving current to cause the organic light emitting diode to emit light. Furthermore, the data line capacitor C_{data_{mk}} is formed in the data line D_{mk} to supply the data voltage to the pixel 110.

The organic light emitting diode has an anode electrode connected to the pixel driving circuit 111, and a cathode electrode connected to a second power supply voltage line V_{ss}. A second power supply V_{ss} has a lower voltage than a first power supply V_{dd}, e.g., a ground voltage, a negative voltage or the like. Thus, the organic light emitting diode emits light corresponding to the driving current supplied from the pixel driving circuit 111.

The pixel driving circuit 111 includes one storage capacitor C_{st} and six transistors M1 through M6. The first transistor M1 acts as a driving transistor, the third transistor M3 acts as a threshold voltage compensation transistor for compensating a threshold voltage by causing the first transistor M1 be diode-connected, and the fourth transistor M4 acts as an initialization transistor for initializing the storage capacitor C_{st}. Furthermore, the sixth transistor M6 acts as an emission control transistor for controlling the emission of the organic light emitting diode, and the second and fifth transistors M2 and M5 act as switching transistors.

The first switching transistor M2 has a gate electrode connected to the current scan line S_n and a source electrode connected to the data line D_{mk}, and is turned-on by the scan signal transmitted through the current scan line S_n, thereby transmitting the data voltage supplied from the data line capacitor C_{data_{mk}}.

The driving transistor M1 has a source electrode connected to a drain electrode of the first switching transistor M2, and a gate electrode connected to a node N. At the node N, a source or drain electrode of the threshold voltage compensation transistor M3 and a first terminal of the storage capacitor C_{st} are connected in common, and a gate voltage of the driving transistor M1 is determined. Thus, the driving transistor M1 generates a driving current corresponding to the voltage supplied to the gate electrode.

The threshold voltage compensation transistor M3 is connected between the gate and source electrodes of the driving transistor M1, and causes the driving transistor M1 be diode-connected in response to the scan signal transmitted through the current scan line S_n. Thus, the driving transistor M1 acts as a diode according to the scan signal, thereby supplying a voltage of V_{data}-V_{th} [V] to the node N. The voltage of V_{data}-V_{th} [V] is used as the gate voltage of the driving transistor M1.

The initialization transistor M4 is connected between the initialization voltage line V_{init} and the first terminal of the storage capacitor C_{st}, and discharges electrical charges stored in the storage capacitor C_{st} during the previous frame through the initialization voltage line V_{init} in response to the scan signal of the (n-1)th scan line S_{n-1} connected to the gate electrode, thereby initializing the storage capacitor C_{st}.

The second switching transistor M5 is connected between the first power supply voltage line V_{dd} and the source electrode of the driving transistor M1, and is turned-on by the emission control signal transmitted through the emission control line E_n connected to the gate electrode thereof, thereby supplying the first power voltage V_{dd} to the source electrode of the driving transistor M1.

The emission control transistor M6 is connected between the driving transistor M1 and the organic light emitting diode, and transmits the driving current to the organic light emitting diode, wherein the driving current is generated in the driving transistor M1 in response to the emission control signal transmitted through the emission control line E_n connected to the gate electrode thereof.

The storage capacitor C_{st} is connected between the first power supply voltage line V_{dd} and the gate electrode of the driving transistor M1, and maintains electrical charges corresponding to the voltage of V_{data}-V_{th}[V] supplied between the first power voltage V_{dd} and the gate electrode of the driving transistor M1 for one frame.

In FIG. 4, the first through sixth transistors M1 through M6 are formed of PMOSFETs, but are not limited thereto. Alternatively, the first through sixth transistors M1 through M6 can be formed of NMOSFETs.

Thus, a voltage corresponding to the data signal is stored in the data line capacitor C_{data_{mk}} in the data program period, and the voltage stored in the data line capacitor C_{data_{mk}} is supplied to the pixel in the scan period, thereby supplying the data signal to the pixel with the foregoing configuration. Because the voltages stored in the data line capacitors C_{data11} through C_{data_{nk}} are supplied to the pixels at the same time, respectively, i.e., because the data signals are supplied at the same time, an image is displayed with uniform brightness.

However, as the data program period and the scan period are separated using the demultiplexer, the data line capacitor C_{data_{mk}} and the storage capacitor C_{st} of the pixel, which are separated from each other in the data program period, are connected to each other in the scan period, so that the electrical charge corresponding to the data voltage V_{data} stored in the data line capacitor C_{data_{mk}} is shared between the data line capacitor C_{data_{mk}} and the storage capacitor C_{st}. Hence, the gate voltage V_{G_{M1}} of the driving transistor M1 can be substantially obtained by Equation 1.

$$V_{G_{M1}} = (C_{data} * V_{data} + C_{st} * V_{init}) / (C_{data} + C_{st}) \quad \text{Equation 1:}$$

where, V_{G_{M1}}, is a gate voltage of the driving transistor M1, V_{data} is a data voltage, V_{init} is an initialization voltage, V_{dd} is a first power supply voltage, C_{data} is the capacitance of each data line capacitor, and C_{st} is the capacitance of each storage capacitor of the pixel.

Referring to Equation 1, the difference between the gate voltage $V_{G_{M1}}$, of the driving transistor M1 and the data voltage V_{data} varies depending on the capacitance of the data line capacitor C_{data} and the storage capacitor C_{st} . That is, a voltage lower than the data voltage supplied to the data line is supplied to the gate electrode of the driving transistor. Thus, it is difficult to display black, so that a contrast ratio is lowered.

This problem can be solved by increasing a black data voltage. However, it is impossible to supply the higher black data voltage because of the specifications of the data driver. Alternatively, this problem can be solved by lowering the first power supply voltage V_{dd} . In this case, black can be displayed, but the second power supply voltage V_{ss} must be lowered as much as the first power supply voltage V_{dd} . Therefore, DC/DC efficiency of the second power supply voltage V_{ss} is remarkably decreased.

Therefore, the pixel according to an embodiment of the present invention includes an auxiliary capacitor C_{aux} therein as shown in FIG. 4.

The auxiliary capacitor C_{aux} has a first electrode connected in common to the current scan line S_n and the gate electrode of the first switching transistor M2, and a second electrode connected in common to the storage capacitor C_{st} and the gate electrode of the driving transistor M1.

The auxiliary capacitor C_{aux} boosts up the gate voltage V_G of the driving transistor M1 while making a transition from the scan period to the emission period. It is assumed that a low level voltage of the scan signal is a low scan voltage V_{VSS} , and a high level voltage of the scan signal is a high scan voltage V_{VDD} . The voltage supplied to the first electrode of the auxiliary capacitor C_{aux} is transitioned from the low scan voltage V_{VSS} to the high scan voltage V_{VDD} , so that the gate voltage of the driving transistor M1 is boosted up as much as a compensation voltage due to coupling between the storage capacitor C_{st} and the auxiliary capacitor C_{aux} .

Finally, the gate voltage V_G of the driving transistor M1 can be obtained by Equation 2.

$$C_{st}(V_G - V_{G_{M1}}) = C_{aux}\{(V_{G_{M1}} - V_G) - (V_{VSS} - V_{VDD})\}$$

$$V_G = V_{G_{M1}} + C_{aux}/(C_{st} + C_{aux}) * (V_{VDD} - V_{VSS}) \quad \text{Equation 2:}$$

where, V_G is a gate voltage of the driving transistor M1 after forming the auxiliary capacitor C_{aux} , $V_{G_{M1}}$ is a gate voltage of the driving transistor M1 before forming the auxiliary capacitor C_{aux} , V_{VDD} is the high level scan signal, V_{VSS} is the low level scan signal, C_{aux} is the capacitance of the auxiliary capacitor, and C_{st} is the capacitance of the storage capacitor.

Referring to Equation 2, after forming the auxiliary capacitor C_{aux} , the gate voltage of the driving transistor M1 increases as much as the compensation voltage of $C_{aux}/(C_{st} + C_{aux}) * (V_{VDD} - V_{VSS})$, thereby compensating the decreased voltage.

For example, when the first power supply voltage V_{dd} is equal to the black data voltage, a very high black level current of about 7 nA flows in the driving transistor M1 before forming the auxiliary capacitor C_{aux} , so that a contrast ratio is greatly lowered. On the other hand, according to an embodiment of the present invention, a black level current of about 0.02 nA flows in the driving transistor M1 after forming the auxiliary capacitor C_{aux} , thereby satisfying the specifications of the data driver, and enhancing the contrast ratio. Preferably, the capacitance of the storage capacitor C_{st} is larger than that of the auxiliary capacitor C_{aux} . In the foregoing example, the measured currents are obtained under the

condition that the capacitance of the storage capacitor C_{st} is larger than that of the auxiliary capacitor C_{aux} by ten times.

FIG. 5 is a circuit diagram of the detailed connection structure between the representative demultiplexer of FIG. 3 and the representative pixels of FIG. 4 according to an embodiment of the present invention, and FIG. 6 is a timing diagram illustrating operations of the pixel circuit of FIG. 5.

In FIG. 5, assuming that red (R), green (G) and blue (B) sub-pixels are connected to one demultiplexer 151 connected to the 1st output line D1 (i.e., $k=3$).

Referring to FIGS. 5 and 6, a low level scan signal is supplied to the $(n-1)^{th}$ scan line S_{n-1} in the $(n-1)^{th}$ scan period of one horizontal period 1H. When the low level scan signal is supplied to the $(n-1)^{th}$ scan line S_{n-1} , each initialization transistor M4 of the R, G and B sub-pixels, i.e., the gate voltage of the driving transistor M1 is initialized. Thus, when the low level scan signal is supplied to the $(n-1)^{th}$ scan line S_{n-1} , the first switching transistor M2 connected to the n^{th} scan line S_n maintains a turned-off state.

Then, a first switching element T1, a second switching element T2, and a third switching element T3 are turned-on in sequence by first through third control signals CS1, CS2 and CS3 sequentially supplied in the data program period. First, when the first switching element T1 is turned-on by the first control signal CS1, the R data signal is supplied from the first output line D1 to the first data line D11. The first data line capacitor C_{data11} then stores a voltage corresponding to the R data signal supplied to the first data line D11. Next, when the second switching element T2 is turned-on by the second control signal CS2, the G data signal is supplied from the first output line D1 to the second data line D12. The second data line capacitor C_{data12} then stores a voltage corresponding to the G data signal supplied to the second data line D12. Finally, when the third switching element T3 is turned-on by the third control signal CS3, the B data signal is supplied from the first output line D1 to the third data line D13. The third data line capacitor C_{data13} then stores a voltage corresponding to the B data signal supplied to the third data line D13. The scan signal is not supplied to the n^{th} scan line S_n during the data program period, so that the R, G and B data signals are not supplied to the R, G and B pixels.

Then, in the n^{th} scan period following the data program period, a low level scan signal is supplied to the n^{th} scan line S_n . When the scan signal is supplied to the n^{th} scan line S_n , each first switching transistor M2 and each threshold voltage compensation transistor M3 of the R, G and B pixels are turned-on. Each first switching transistor M2 of the R, G and B pixels respectively transmits the voltages V_{data} corresponding to the R, G and B data signals, which are stored in the first through third data line capacitors C_{data11} through C_{data13} during the data program period, to the R, G and B pixels. The threshold voltage compensation transistor M3 allows the driving transistor M1 to be diode-connected. Through the diode-connected driving transistor M1, a voltage $(V_{data} - V_{th_{M1}}[V])$ corresponding to the difference between the threshold voltage V_{th} of the driving transistor M1 and the voltage V_{data} corresponding to the R, G and B data signals, which are stored in the first through third data line capacitors C_{data11} through C_{data13} , is supplied to the gate electrode of the driving transistor M1 and the first terminal of the storage

capacitor Cst. The voltage supplied to the gate terminal of the driving transistor M1 is based on Equation 1.

Then, when the n^{th} scan signal is changed to a high level and a low level emission control signal is supplied to the emission control line En, the second switching transistor M5 and the emission control transistor M6 are turned-on, so that the first power supply voltage Vdd supplied to the source electrode of the driving transistor M1 and a driving current corresponding to the gate voltage are supplied to the organic light emitting diode through the emission control transistor M6, thereby emitting light with predetermined brightness. The gate voltage of the driving transistor M1 is based on Equation 2.

Thus, in the OLED according to an embodiment of the present invention, the R, G and B data signals sequentially supplied from one 1st output line D1 can be supplied to k data lines D11 through D1k using the demultiplexer 151. Furthermore, voltages corresponding to the data signals are stored in the data line capacitors C_{data11} through C_{data1k} in the data program period, and the voltages stored in the data line capacitors C_{data11} through C_{data1k} are supplied to the pixels during the scan period. Thus, the voltages stored in the data line capacitors C_{data11} through C_{data1k} are supplied to the pixels at the same time, so that the data signals are supplied at the same time, thereby displaying an image with uniform brightness.

Furthermore, the auxiliary capacitor Caux is provided in each pixel, so that the lowering of the voltage supplied to the pixel due to charge sharing between the data line capacitor Cdata and the storage capacitor Cst is avoided, thereby enhancing the contrast ratio.

In the OLED according to an embodiment of the present invention, red, green and blue organic materials are used to emit light. The red, green and blue organic materials are different in emission brightness according to the intensity of a current flowing therein. That is, the red, green and blue organic materials are different in efficiency, so that the red, green and blue data voltage must be different so as to adjust white balance. However, when differences among the red, green and blue data voltages are large, it is difficult to drive the OLED.

Therefore, in the OLED according to an embodiment of the present invention, the red, green and blue sub-pixels have auxiliary capacitors which have different respective capacitances, thereby adjusting the white balance with the same data voltage.

FIG. 7 is a simulation graph showing changes in a driving current according to the capacitance of the auxiliary capacitor in the pixel of FIG. 4.

In FIG. 7, the horizontal axis indicates the capacitance of the auxiliary capacitor Caux, and the capacitance decreases as goes to the right. The unit of capacitance of the auxiliary capacitor Caux is PF (Picofarads). The vertical axis indicates a white current flowing in the pixel, and the unit of the white current is nA (Nanoamperes).

As shown in FIG. 7, the current in the pixel increases as the capacitance of the auxiliary capacitor Caux decreases with respect to the same data voltage. For example, when the auxiliary capacitor Caux has a capacitance of 0.05 PF, the pixel has a current of 10 nA. When the auxiliary capacitor Caux has a capacitance of 0.03 PF, the pixel has a current of 220 nA. When the auxiliary capacitor Caux has a capacitance of 0.01 PF, the pixel has a current of 440 nA. Generally, the emission efficiency of the organic material increases in order of green>red>blue.

Thus, when the red, green and blue sub-pixels have a white current ratio of about 2:1:4 to generate a white pixel, the

auxiliary capacitors Caux of the red, green and blue sub-pixels have a capacitance ratio of about 3:5:1, thereby adjusting the white balance with the same data voltage. That is, the capacitance of each auxiliary capacitor is inversely proportional to the white current ratio.

FIG. 8 is a layout diagram of red, green and blue sub-pixels capable of adjusting white balance with the same voltage based on the simulation of FIG. 7 according to an embodiment of the present invention.

Referring to FIG. 8, the red, green and blue pixels have the same layout except the capacitance of the auxiliary capacitor. Furthermore, each pixel circuit has the connection structure as shown in FIG. 4, and the layout of FIG. 8 is as follows.

In the R pixel, the previous scan line Sn-1, the current scan line Sn, the emission control line En and the initialization voltage line Vinit extend parallel to one another in a first direction. Furthermore, the first power supply voltage line Vdd and the data line Dm extend parallel to each other in a second direction. The lines extending along the first direction and the lines extending along the second direction intersect each other, with an insulating layer interposed therebetween.

As shown in FIG. 8, the first switching transistor M2, the driving transistor M1, the threshold voltage compensation transistor M3, the second switching transistor M5, and the emission control transistor M6 are formed of a first semiconductor layer. Furthermore, the initialization transistor M4 is formed of a second semiconductor layer.

The current scan line Sn functions as gate electrodes of the first switching transistor M2 and the threshold voltage compensation transistor M3. The previous scan line Sn-1 functions as a gate electrode of the initialization transistor M4. Furthermore, the emission control line En functions as gate electrodes of the second switching transistor M5 and the emission control transistor M6.

The storage capacitor Cst includes an upper substrate and a lower substrate corresponding to the first power supply voltage line. The auxiliary capacitor Caux includes a lower substrate corresponding to the current scan line Sn and an upper substrate corresponding to the gate electrode of the driving transistor M2. The auxiliary capacitor Caux varies in size according to the red, green and blue pixels. The capacitance of the auxiliary capacitor Caux can be adjusted by changing the size of the upper substrate used as the gate electrode of the driving transistor M2.

As shown in FIG. 7, when the red, green and blue sub-pixels have a white current ratio of 2:1:4, then the auxiliary capacitors Caux should have a capacitance ratio of 3:5:1, so that the white balance can be adjusted with respect to the same data voltage. Therefore, as shown in FIG. 8, the auxiliary capacitors Caux(R), Caux(G) and Caux(B) of the red, green and blue sub-pixels are different in size.

The capacitance of the auxiliary capacitor Caux varies according to the emission efficiency of each organic material. As the emission efficiency of each organic material increases, i.e., the brightness increases with respect to the same intensity of current, the capacitance of the auxiliary capacitor Caux should become larger. Generally, the green organic material has the highest emission efficiency, the red organic material has the second emission efficiency, and the blue organic material has the lowest emission efficiency. Therefore, the capacitance of the auxiliary capacitor Caux is determined in order of green>red>blue.

As described above, in the OLED according to an embodiment of the present invention, each pixel includes the auxiliary capacitor Caux, so that the decreased data voltage supplied to the pixel by driving the demultiplexer is compensated, and thus the contrast ratio is enhanced by

allowing black to be displayed. Thus, there is no need to lower the power supply voltage Vdd and Vss, and the DC/DC efficiency is not decreased.

Furthermore, the capacitance of the auxiliary capacitor Caux varies according to each emission efficiency of the red, green and blue sub-pixels, so that the white balance is adjusted with the same data voltage, and thus the OLED is easily driven.

Although the present invention has been described with reference to certain exemplary embodiments thereof, it will be understood by those skilled in the art that a variety of modifications and variations can be made to the present invention without departing from the spirit or scope of the present invention defined in the appended claims.

What is claimed is:

1. An Organic Light Emitting Display (OLED) having a plurality of pixels each having a red sub-pixel, a green sub-pixel, and a blue sub-pixel, each sub-pixel comprising:

a pixel driver connected to a data line, a scan line and a first power supply voltage line, and including a storage capacitor adapted to store a driving voltage supplied via the data line, and generating a predetermined driving current; and

an organic light emitting diode connected between the pixel driver and a second power supply voltage line, and adapted to emit light with a brightness corresponding to the driving current; and

an auxiliary capacitor directly connected between the storage capacitor and the scan line, and adapted to generate a compensation voltage to increase the driving voltage according to a scan voltage transition of a scan signal transmitted through the scan line;

wherein the auxiliary capacitors of the sub-pixels have different capacitances according to an emission efficiency ratio of their respective sub-pixels, and the auxiliary capacitor comprises a first electrode directly connected to the scan line and a second electrode directly connected to a gate electrode of a driving transistor which solely generates the driving current, and

wherein the compensation voltage is increased by the auxiliary capacitor solely as defined by:

$$V_x = C_{aux} / (C_{st} + C_{aux}) * (V_{DD} - V_{SS})$$

where Vx is the compensation voltage, Caux is a capacitance of the auxiliary capacitor, Cst is a capacitance of the storage capacitor, VDD is a high level scan signal, and VSS is a low level scan signal, and

wherein the auxiliary capacitor of the green sub-pixel has a larger capacitance than that of the auxiliary capacitor of the red sub-pixel, the auxiliary capacitor of the red sub-pixel has a larger capacitance than that of the auxiliary capacitor of the blue sub pixel and the capacitance of the auxiliary capacitor Caux is determined in order of green>red>blue.

2. The OLED according to claim 1, wherein the capacitance of the auxiliary capacitor is inversely proportion to a driving current ratio of the sub-pixels to generate a white pixel.

3. The OLED according to claim 1, wherein the pixel driver further comprises:

an initialization transistor connected between a first terminal of the storage capacitor and an initialization voltage line, and adapted to be turned-on by an (n-1)th scan signal to initialize the storage capacitor;

a first switching transistor connected to the data line, and adapted to be turned-on by an nth scan signal to transmit the data voltage;

a driving transistor having a first electrode connected to the first switching transistor and a gate electrode connected to a first terminal of the storage capacitor, and adapted to generate the driving current;

a threshold voltage compensation transistor connected between the gate electrode and a second electrode of the driving transistor, and adapted to be turned-on by the nth scan signal to cause the driving transistor be diode-connected and to compensate a threshold voltage of the driving transistor; and

a second switching transistor connected between the first power supply voltage line and the second electrode of the driving transistor, and adapted to be turned-on by an nth emission control signal to transmit the first power supply voltage to the second electrode of the driving transistor.

4. The OLED according to claim 3, wherein the pixel driver further comprises an emission control transistor connected between the driving transistor and the organic light emitting diode, and adapted to be turned-on by the nth emission control signal to transmit the driving current to the organic light emitting diode.

5. The OLED according to claim 4, wherein the driving transistor, the first switching transistor, the threshold voltage compensation transistor, the initialization transistor, the second switching transistor, and the emission control transistor comprise N or P MOSFETs having the same conductivity type.

6. An Organic Light Emitting Display (OLED), comprising:

a plurality of pixels each having a red sub-pixel, a green sub-pixel, and a blue sub-pixel, each sub-pixel comprising:

a pixel driver connected to a data line, a scan line and a first power supply voltage line, and including a storage capacitor adapted to store a driving voltage supplied via the data line, and generating a predetermined driving current; and

an organic light emitting diode connected between the pixel driver and a second power supply voltage line, and adapted to emit light with a brightness corresponding to the driving current; and

an auxiliary capacitor directly connected between the storage capacitor and the scan line, and adapted to generate a compensation voltage to increase the driving voltage according to a scan voltage transition of a scan signal transmitted through the scan line, the auxiliary capacitors of the sub-pixels having different capacitances according to an emission efficiency ratio of the sub-pixels corresponding to the auxiliary capacitor, and the auxiliary capacitor comprises a first electrode directly connected to the scan line and a second electrode directly connected to a gate electrode of a driving transistor which solely generates the driving current, and wherein the compensation voltage is increased by the auxiliary capacitor solely as defined by:

$$V_x = C_{aux} / (C_{st} + C_{aux}) * (V_{DD} - V_{SS})$$

where Vx is the compensation voltage, Caux is a capacitance of the auxiliary capacitor, Cst is a capacitance of the storage capacitor, VDD is a high level scan signal, and VSS is a low level scan signal, and

wherein the auxiliary capacitor of the green sub-pixel has a larger capacitance than that of the auxiliary capacitor of the red sub-pixel, the auxiliary capacitor of the red sub-pixel has a larger capacitance than that of the auxiliary

15

capacitor of the blue sub-pixel and the capacitance of the auxiliary capacitor Caux is determined in order of green>red>blue.

7. The OLED according to claim 6, wherein the capacitance of the auxiliary capacitor is inversely proportion to a driving current ratio of the sub-pixels to generate a white pixel.

8. The OLED according to claim 6, wherein the pixel driver further comprises:

an initialization transistor connected between a first terminal of the storage capacitor and an initialization voltage line, and adapted to be turned-on by an (n-1) scan signal to initialize the storage capacitor;

a first switching transistor connected to the data line, and adapted to be turned-on by an nth scan signal to transmit the data voltage;

a driving transistor having a first electrode connected to the first switching transistor and a gate electrode connected to a first terminal of the storage capacitor, and adapted to generate the driving current;

16

a threshold voltage compensation transistor connected between the gate electrode and a second electrode of the driving transistor, and adapted to be turned-on by the nth scan signal to cause the driving transistor be diode-connected and to compensate a threshold voltage of the driving transistor; and

a second switching transistor connected between the first power supply voltage line and the second electrode of the driving transistor, and adapted to be turned-on by an nth emission control signal to transmit the first power supply voltage to the second electrode of the driving transistor.

9. The OLED according to claim 8, wherein the pixel driver further comprises an emission control transistor connected between the driving transistor and the organic light emitting diode, and adapted to be turned-on by the nth emission control signal to transmit the driving current to the organic light emitting diode.

* * * * *

有机发光显示器 (OLED) 能够使用多路分解器减少数据驱动器的输出线数量, 显示具有均匀亮度的图像, 以及调整白平衡包括: 多个红色, 绿色和蓝色子像素每个子像素都设有辅助电容, 以补偿降低的驱动电压。根据红色, 绿色和蓝色子像素的发射效率, 各个辅助电容器的电容不同。绿色子像素的辅助电容器具有比红色子像素的辅助电容器大的电容, 并且红色子像素的辅助电容器具有比蓝色子像素的辅助电容器更大的电容。这样可以使用相同的数据电压调整白平衡。

